



Printed in China  
Item Code  
1134106060110

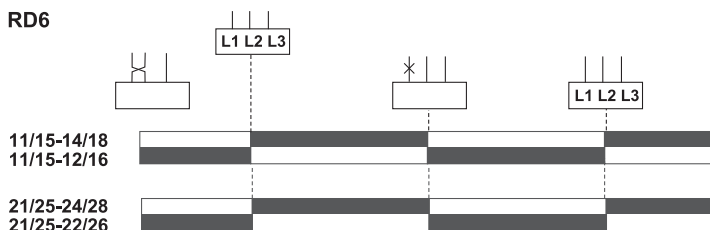


## Main Technical Parameters

Rated insulation voltage $U_i$	500 VAC
Rated working current ( $I_e$ ) and rated working voltage ( $U_e$ ) under working class	AC-15:2A/250V DC-13:2A/24V
Cover protection class	IP20
Fuse type for rated short-circuit current test	NT00-4
Power voltage	200V~500VAC

## Diagram Between Phase Voltage Input And Relay Contactors

RD6

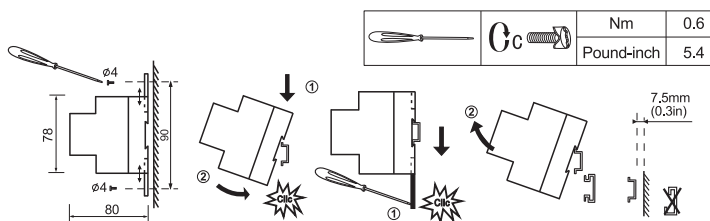


Note: Black shows the relays are closed



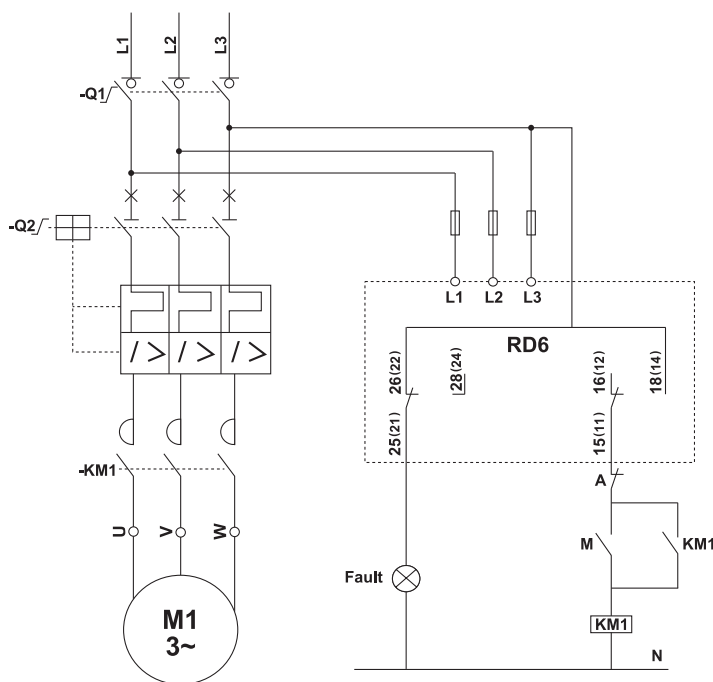
A motor that continues to turn despite loss of a phase can regenerate a voltage. If this voltage exceeds the sensing threshold, the relay will not detect phase loss. In this case, we recommend use of RM series.

## Installation and Dimension



Wires cross section area						
RD6	mm <sup>2</sup>	0.14...1.5	0.14...1.5	0.14...2.5	0.14...4	0.14...2.5
	AWG	26...16	26...16	26...14	26...12	26...14

## Input and Output Electric Diagram



## Quality Commitment

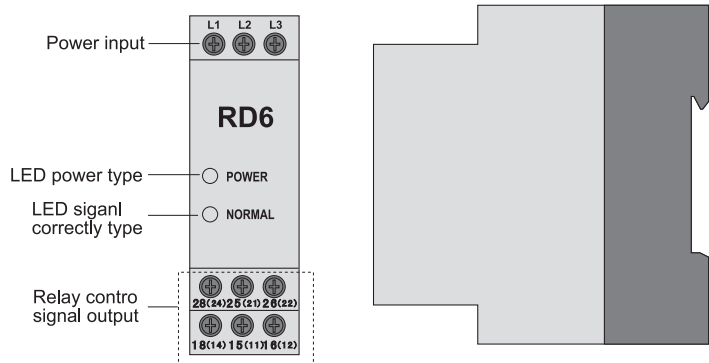
The warranty is 18 months. If there is any quality problem with the product, it can be accessible returned. We are responsible for maintaining or exchanging freely if it breaks down in the period of warranty. The products performance damages caused by improper usage are not within range of quality warranty and we are not responsible for repairing freely. The company makes sure the quality of our products all the time.

# RD6 Phase Protection Relay

USER MANUAL V 1.4

CBR ELECTRIC CO.,LTD

## Introduction to the Main Interface and Connectors



## Status LED Indicators

Indicator	LED	Faults	Diagram
Power Indicator (POWER)	OFF	Not connected with 3 phases or only 1 phase	
	ON	Connected with 3 phases or 2 phases	
Normal Indicator (NORMAL)	ON	Three phases work normally. Contactors of 18 and 15 are closed. Contactors of 28 and 25 are closed.	
	OFF	Phase loss or phase failure. Contactors of 16 and 15 are closed. Contactors of 26 and 25 are closed.	

## Notes



### HAZARDOUS VOLTAGE

Disconnect all power before servicing equipment.  
Electric shock will result in death or serious injury.



Printed in China  
Item Code  
1134106060110

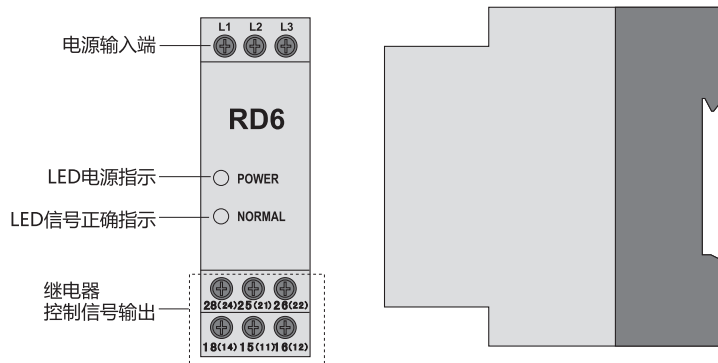


## RD6 相序保护继电器

### 安装使用说明书 V 1.4

浙江卡巴尔电气有限公司

## 主机界面及接口简介



## LED指示灯状态指示

指示灯	LED状态	现象解析	图示
电源指示灯 (POWER)	灭	没接三相电或就接了一相	
	亮	接三相电或接了两相	
正常指示灯 (NORMAL)	亮	三相电运行正常。触点"18"和"15", "28"和"25"闭合。	
	灭	缺相, 错相。触点"16"和"15", "26"和"25"闭合	

## 注意事项



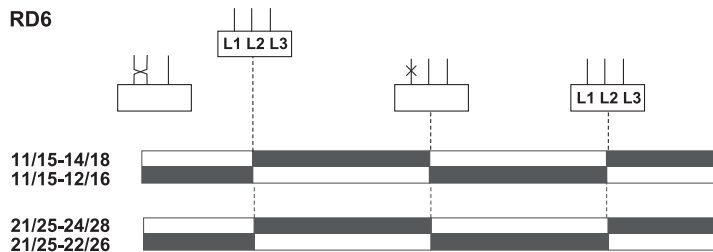
**危险电压:** 维修设备之前必须关闭所有电源。触电将导致死亡或严重伤害。

## 主要技术参数

额定绝缘电压Ui	500 VAC
使用类别下的各个额定工作电流Ie/额定工作电压Ue	AC-15:2A/250V DC-13:2A/24V
外壳防护等级IP	IP20
额定限制短路电流试验时所配的熔断器型号	NT00-4
控制电源电压	200V~500VAC

## 相电压输入与继电器触点动作关系图

RD6

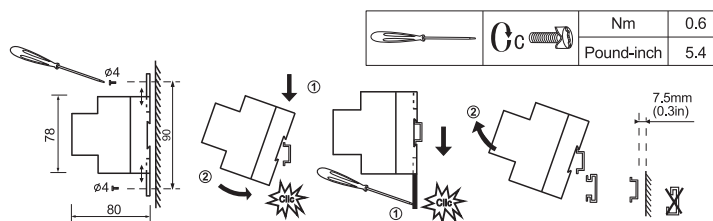


注: 黑色部分为继电器闭合



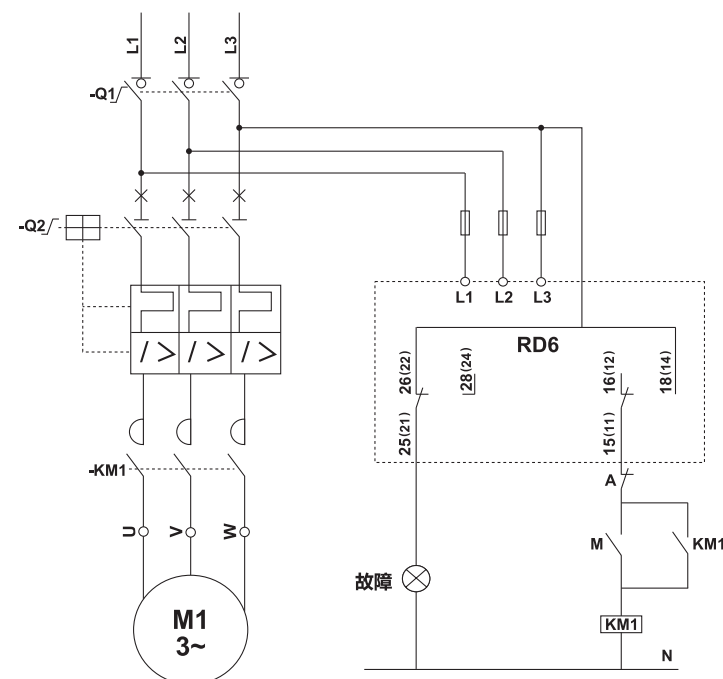
电机继续运转时尽管这一阶段有一定的损失电压, 但在这阶段能产生一个电压, 如果这一电压超出感应的极限值, 继电器将不能查出这一阶段的损失。在这种情况下, 我们推荐您使用RM系列

## 安装方法及尺寸图



导线横截面积					
RD6	mm <sup>2</sup>	0.14...1.5	0.14...1.5	0.14...2.5	0.14...4
	AWG	26...16	26...16	26...14	26...12

## 输入输出电路电气图



## 质量承诺

本公司产品的质保期为18个月, 确因产品质量问题可无条件退换。如若产品在质保期内发生故障, 本公司负责免费维护或调换。若因用户使用不当而影响产品性能或造成危害, 不在本公司的产品质量保证范围内, 本公司不负责该产品的免费维护。本公司一如既往地坚守对自己的产品质量保证。