

# SUMT-QZX(A) 起重量限制器

## 安装使用说明书 V 2.1

宁波赛姆特电气有限公司

### 控制器外观说明

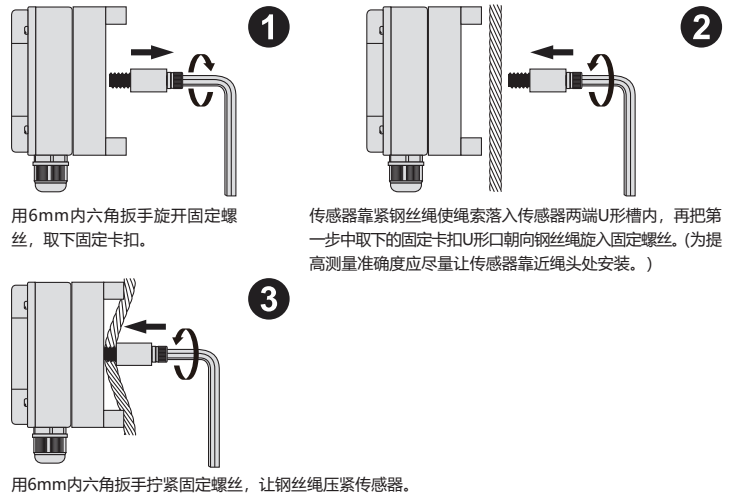


	确认键		长按: 去皮 短按: 去皮/不去皮切换
	返回键		长按: 额载、绳轮比设定 短按: 重量/百分比切换
	长按: 已知载重修正 短按: 数据递减 (长按快速递减)		
	数据递减 (长按快速递减)		

### 接线方式说明

	红色	系统供电电源
	红色	AC/DC 16-65V或AC/DC 65-440V
	黄色	报警1
	黄色	超载输出端

### 传感器安装方式



### 调试说明( 2选1进行调试操作):

#### 特别提醒

- 去皮灯闪烁, 提示缺少去皮操作; 3个报警灯闪烁, 提示缺少额定载荷设定。
- 调试完成后如果需要修改额定载荷, 只需执行【方式2】中的B步骤即可。
- 已知砝码重量调试中, 砝码重量必须不小于额定载荷的50%, 否则将影响准确度。

#### 【方式1】无砝码(推荐)调试步骤

- A 去皮操作**→空载; 长按[A]键5秒, 从[9999]至[0000]倒计时提示直到[2E-0]完成。
- B 额定载荷和绳轮比系数设定**→长按[B]键5秒, [FULL]提示设定额定值(KG), 按[OK]键等待设定, 按[+]或[-]键设定额定值, 完成后按[OK]键保存。[PE]提示修改绳轮比, 按[OK]键后等待设定, 按[+]或[-]键设定绳轮比, 完成后按[OK]键保存。

#### 【方式2】已知砝码重量调试步骤

- A 去皮操作**→空载; 长按[A]键5秒, 从[9999]至[0000]倒计时提示直到[2E-0]完成。
- B 额定载荷设定**→长按[B]键5秒, [FULL]提示设定额定值(KG), 按[OK]键等待设定, 按[+]或[-]键设定额定值, 完成后按[OK]键保存, 再按[ESC]键返回。
- B 已知砝码重量设定**→放入已知重量砝码, 长按[+]键5秒, 闪烁提示当前载重重量(KG), 按[+]或[-]键进行修改, 修改成实际砝码重量后按[OK]键从[9999]至[0000]倒计时保存数据。

### 菜单功能说明

同时按下[OK]键和[ESC]键后同时松开, 显示器提示[CC00], 按[+]或[-]键输入密码至显示[CC11], 按[OK]键, 进入菜单选项。

- 按[OK]键进入下一级菜单
- 按[ESC]返回上级菜单
- 按[+]或[-]键在同级菜单选择
- 修改完参数需按[OK]键确认
- 动作值以额定载荷为基点计算。如80%为额定载荷值的80%

Pr--	/系统配置参数
PO1	/备用
PO2	/报警提示音选项
oPEn	/oPEn-开启, CLoS-关闭
95	/提示音预警值设定 (80%-100%)
RL--	/继电器配置参数
RL-1	/1号报警继电器配置
105	/动作值设置 (0%-130%)
oPEn	/状态设置(oPEn-动断、CLoS-动合)
RL-2	/2号报警继电器配置
95	/动作值设置 (0%-130%)
CLOs	/备用
RL-3	/3号报警状态指示灯
50	/动作值设置 (0%-130%)
CLOs	/备用

### 故障代码说明

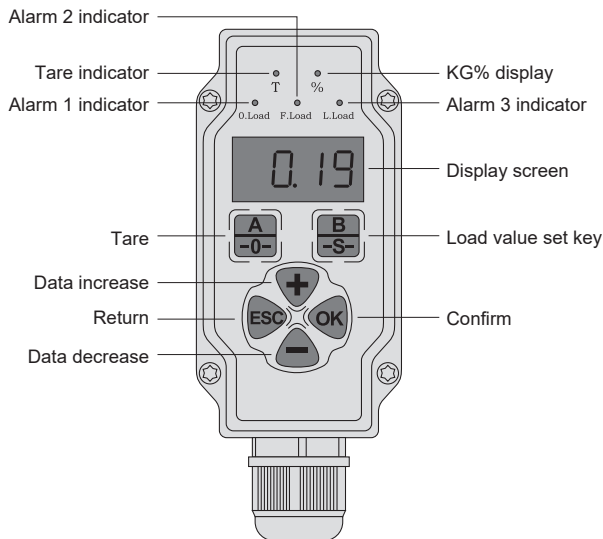
现象解析	故障原因分析	解决方法
E01	采用已知砝码重量调试时, 缺少去皮操作。	放入砝码前先清空轿厢, 长按[A]键5秒完成去皮操作。
E03	采用已知砝码重量调试时, 砝码重量设定小于100KG。	放入不小于50%额定载荷的砝码重量, 并输入实际的砝码重量进行调试操作。
E05	使用过程中实际载荷超过了产品的最大使用量程。	减小实际载荷; 或更换更大量程的限载产品。

# SUMT-QZX(A)

## USER MANUAL V 2.1

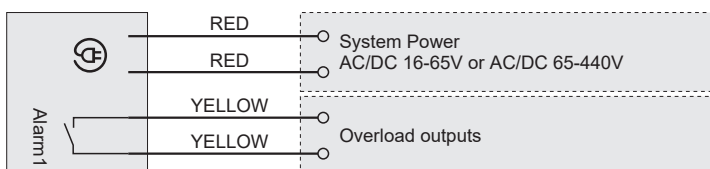
NINGBO SUMMIT ELECTRONIC CO.,LTD

### Controller Appearance

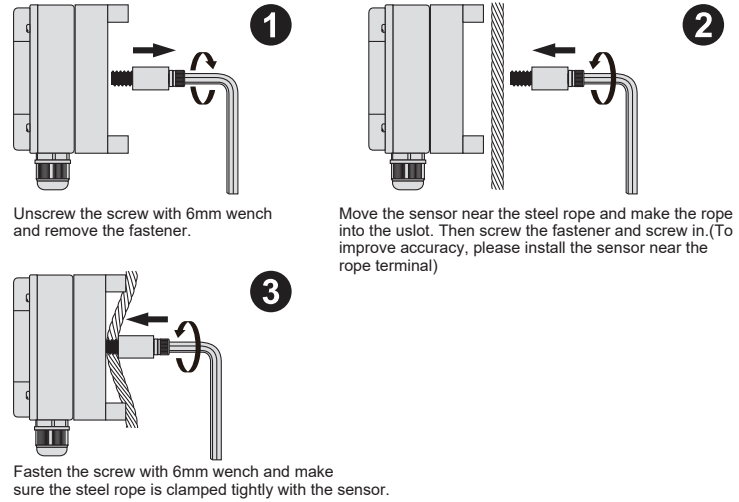


	Confirm		Long press:TARE. Short press:Tare or not
	Return		Long press:Rated load, roping setting. Short press:KG% switch
	Long press:Known weight modification. Short press:Data increase(Long press for fast increase)		
	Data decrease (Long press for fast decrease)		

### Wirings



### Installation



### Calibration (Choose one method)

#### Remind

- Tare indicator blinks means the absent of tare operation. Alarm indicator blinks means the absent of rated load setting.
- To modify the rated load after the calibration, you must need take the step B in the method 2.
- In method 2, the weight used must be more than 50% of rated load otherwise, the accuracy would be low.

#### Method 1: No weight calibration (recommended)

- Tare** → Empty car, long press [A] for 5s, display from **9999** to **0000** till display **2Err**.
- Rated load and roping calibration** → Long press[B] for 5s, it display **FULL**. push [OK], push [+] or [-] to input the rated load value. Then push [OK] to save data. **roPE** push [OK], push [+] or [-] to input roping value. Then push [OK] to save data.

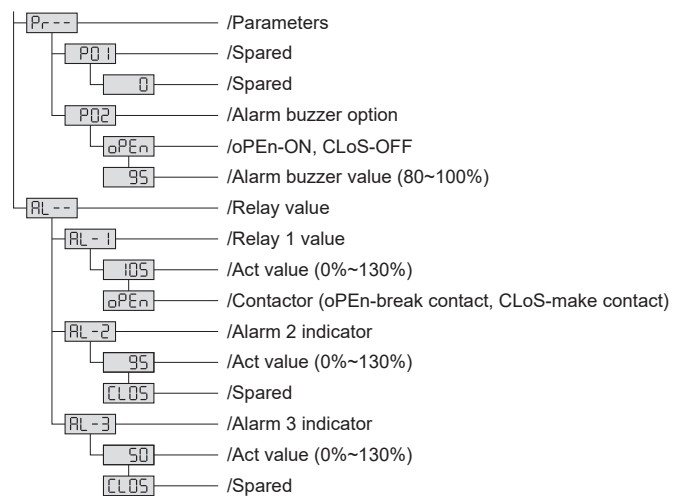
#### Method 2: Know weight calibrations

- Tare** → Empty car, long press [A] for 5s, display from **9999** to **0000** till display **2Err**.
- Rated load calibration** → Long press[B] for 5s, it display **FULL**. push [OK], push [+] or [-] to input the rated load value. push [OK] to save data. Then push [ESC] to return.
- Known weight** → Put the known weight in the car, long press [+] for 5s, data blinks to indicate the weight(KG), push [+] or [-] to modify the data to real weight, the push [OK], it display form **9999** to **0000** and save data automatically.

### Menu functions

Push and release [OK] and [ESC] at the same time. It displays **EC00**. Push [+] or [-] till display **EC11**. Then push [OK] into menu options.

- Press [OK] to next menu.
- Press [ESC] to previous menu.
- Press [+] or [-] to change in same level
- Press [OK] to confirm the values after program
- Act value is ratio with rated load. 80% means:80% of rated load.



### Error codes

Codes	Reasons	Solutions
<b>E01</b>	During known weight calibration, there is absent of TARE operation.	Make the cabin to be empty, Long press [A] for 5 seconds to finish TARE operation.
<b>E03</b>	During known weight calibration, the weight is less than 100KG.	Use the weight of more than 50% of rated weight to calibrate.
<b>E05</b>	The load is exceed the load cell MAX. capacity.	Make the load within the load cell capacity or change load cells with bigger capacity.